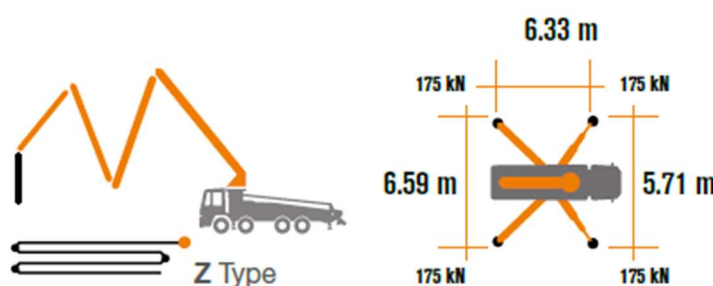


CONCRETE PUMP CIFA K36L - HP1606H

KEY FEATURES

- Assembling on standard 3 axles chassis
- Self-supporting frame, torsion free, FEM designed and fatigue tested at the test bench TEC CIFA
- Articulated boom, FEM designed and fatigue tested at the test bench TEC CIFA
- Placing boom B4Z 36/32, 4 sections, "Z" folding system
- Fully hydraulic outrigger controls on both sides of the truck
- Front "X" style diagonal outriggers with single telescopic opening and swing-out rear outriggers for a quick and easy set-up also in narrow areas
- "Load Sensing" proportional boom control for pumping unit HP-C
- Concrete flow rate regulator
- Safety device on opening inspection hatch
- Pumping unit with open loop (HP1606H)
- Project conforms to Directive Machinery 2006/42/CE
- 2 Proportional radio control Hetronic 3 joystick. 20 mt cable
- Emergency control pad for pumping unit HP-C
- Remote controlled electric vibrator placed on the concrete hopper grid
- Centralized lubrication system for pumping unit
- Automatic oil lubrication system for pumping pistons
- Additional manual lubrication system for pumping pistons
- Hard plastic outrigger support plates with relative housing
- Rear light on hopper
- Level readers for stabilization control
- Accessories for cleaning and pipes washing



JAPAFRICA MOBILITY SOLUTIONS, UNIPessoal LDA

Registada Cons. Reg. Com. Funchal
NIPC 514 591 889
Capital Social 505.000,00€

Rua Ivens, Nº22, 4º Direito
Ilha da Madeira, Funchal (Sé)
9000-046 Funchal

www.japafrica.com

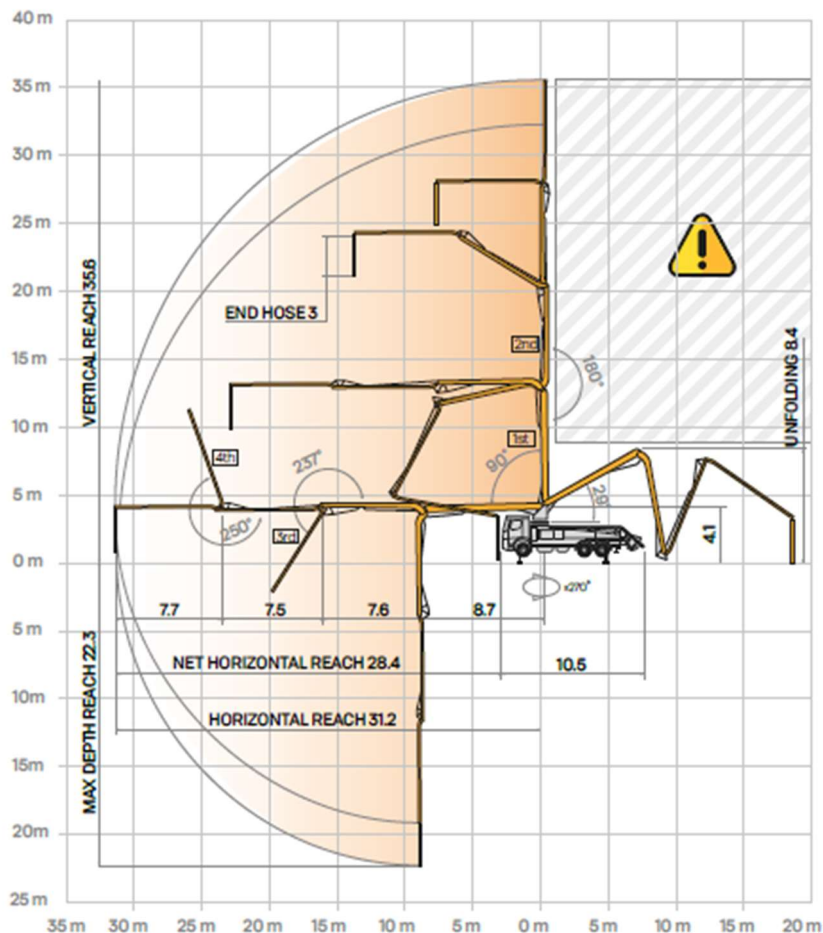


PUMPING UNIT TECHNICAL DATA

Max theoretical output: 160 m³/h
Max pressure on concrete: 53 bar
Concrete cylinders: 230x2,100 mm
Concrete hopper capacity: 550 l
Hydraulic circuit: open

BOOM TECHNICAL DATA

Pipeline diameter: 125 mm
Max vertical reach: 35.50 m
Max horizontal distance: 31.20 m
Net horizontal reach: 28.4 m
Min. unfolding height: 8.4 m
Sections number: 4
1st section opening angle: 90°
2nd section opening angle: 180°
3rd section opening angle: 237°
4th section opening angle: 250°
Rotating angle: +/- 270°
End hose: 3 m



JAPAFRICA MOBILITY SOLUTIONS, UNIPessoal LDA

Registada Cons. Reg. Com. Funchal
NIPC 514 591 889
Capital Social 505.000,00€

Rua Ivens, Nº22, 4º Direito
Ilha da Madeira, Funchal (Sé)
9000-046 Funchal

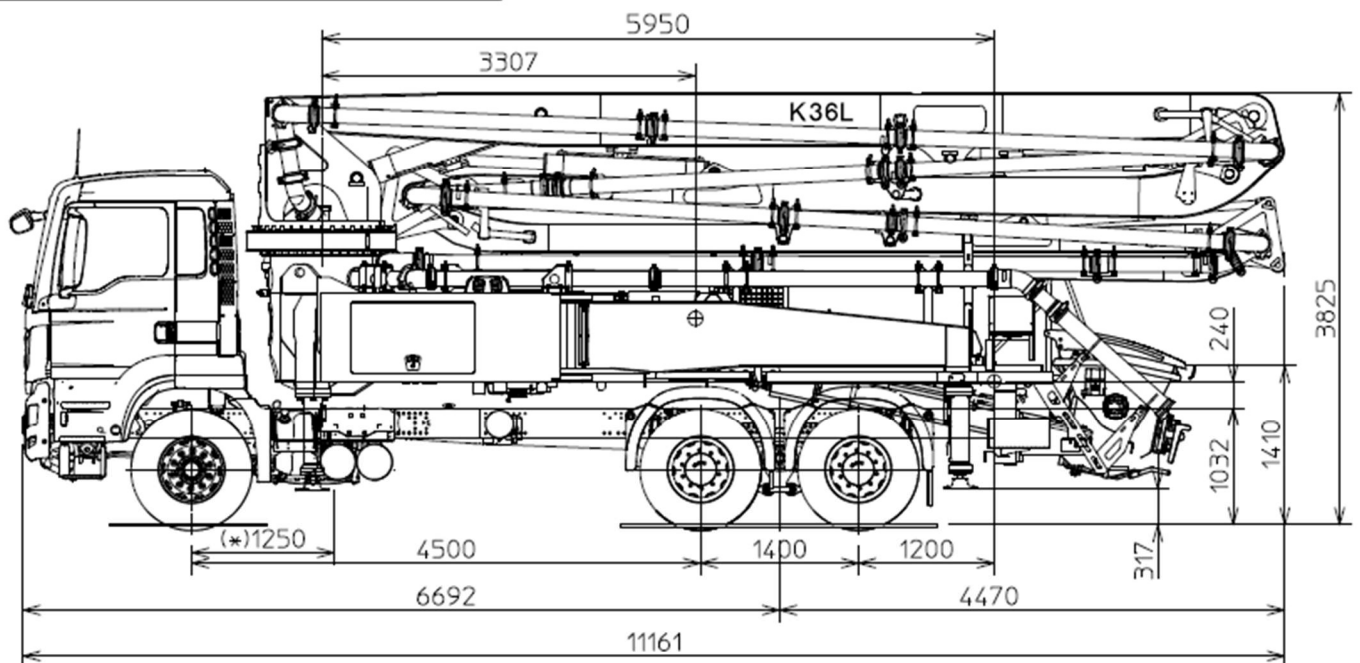


JAPAFRICA
MOBILITY SOLUTIONS

TOTAL WEIGHT

(including only driver and 100 l fuel)

24465 kg



JAPAFRICA MOBILITY SOLUTIONS, UNIPessoal LDA

Registada Cons. Reg. Com. Funchal
NIPC 514 591 889
Capital Social 505.000,00€

Rua Ivens, N°22, 4º Direito
Ilha da Madeira, Funchal (Sé)
9000-046 Funchal

www.japafrica.com