



**JAPAFRICA**  
MOBILITY SOLUTIONS

## BITUMEN SPRAYER – TS 8000 SILVER – SM.PL



\* photo is reference only, deviations are possible

### SPECIFICATIONS

#### MAIN ENGINE

Kubota D902

Fulfilling exhaust emission regulation:

EPA Tier 4 final and EU Stage V

In-line 3-cylinder liquid cooled Diesel

Engine power 16 Kw

Engine radiator with fan

Hydraulic pump driving all the functions

Hydraulic oil tank with filter

Temperature/oil level indicator

#### ENGINE COMPARTMENT

Made of steel structure, placed in the rear of the unit, equipped with two independent shutters to be operated manually.

Includes engine with radiator, hydraulic installation driving all the functions, emulsion filter, RIELLO burner.

#### EMULSION HEATING INSTALLATION

Automatic heating installation of emulsion with RIELLO diesel burner.

Required temperature of emulsion is reached and maintained automatically.

Thermostat for adjusting required temperature.

#### EMULSION INSTALLATION

Emulsion pump SIVAG

Efficiency of 420 l/min

Hydraulic drive

Coat heating system

All valve's functions operated manually

Initiation and switch of functions carried out manually by operator in engine compartment

#### JAPAFRICA MOBILITY SOLUTIONS, UNIPessoal LDA

Registada Cons. Reg. Com. Funchal  
NIPC 514 591 889  
Capital Social 505.000,00€

Rua Ivens, Nº22, 4º Direito  
Ilha da Madeira, Funchal (Sé)  
9000-046 Funchal

[www.japafrica.com](http://www.japafrica.com)

## **EMULSION INSTALLATION (cont.)**

Emulsion filter with coat heating system  
Special drawer protecting against stains  
Spraying lance with the hose of 5,0 m length

## **EMULSION TANK**

Capacity of 8000 L.  
Steel structure, painted, insulated with 100 mm of rockwool, aluminum covered.  
Elliptic profile of the emulsion tank for lowering the center of gravity.  
Emulsion tank filling indicator at the side of the tank.  
Emulsion output connection with fire tip.  
Gravity release in case of emergency.  
Ladder allowing entrance on the emulsion tank structure.

## **OPERATOR PANEL**

Assembled in the truck driver's cabin.  
Allowing switching on and off all main functions.  
Controlling the main spraying parameters by Siemens touchscreen.  
Switching on and off single nozzles by joysticks.

## **COMPUTER CONTROL**

Automatic, computer-controlled installation of spraying process.  
Computer control ensures the maintaining of constant pressure of spraying emulsion, even by changing speed or sprinkling width.

## **CLEANING INSTALLATION**

Manual two step cleaning system for emulsion installation:

1. pre-compressed air insufflation
2. rinsing with cleaning liquid

## **EMULSION SPRAYING BAR TYPE HSB 4000/250**

Smooth and step-less hydraulic regulation of working width in the range of 2 500 – 4 000 mm;  
Total width of the spraying bar 4 000 mm;  
Transport width 2 500 mm.

Triple-piece spray bar with two extensions to be opened with hydraulic drive.  
Hydraulic regulation of the spraying bar height.

Distance between nozzles of 250 mm ensuring single coverage by use of 60-degree nozzles or double coverage by use of 90-degree nozzles.

Special rubber cover of spraying bar.  
Pneumatic cylinders opening and closing single nozzles.  
Opening and closing of nozzles operated manually by switching joystick at operator panel.  
All functions of spray bar including width regulation are to be carried out at operator panel.  
Single nozzles of with easy and trouble-free exchange system.

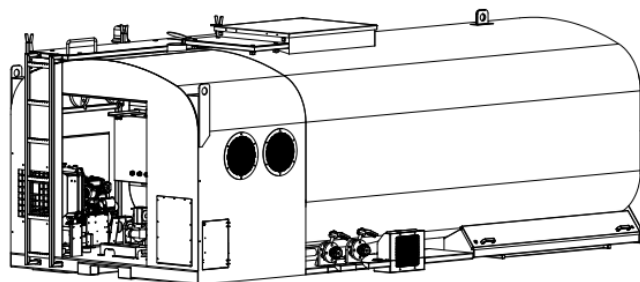
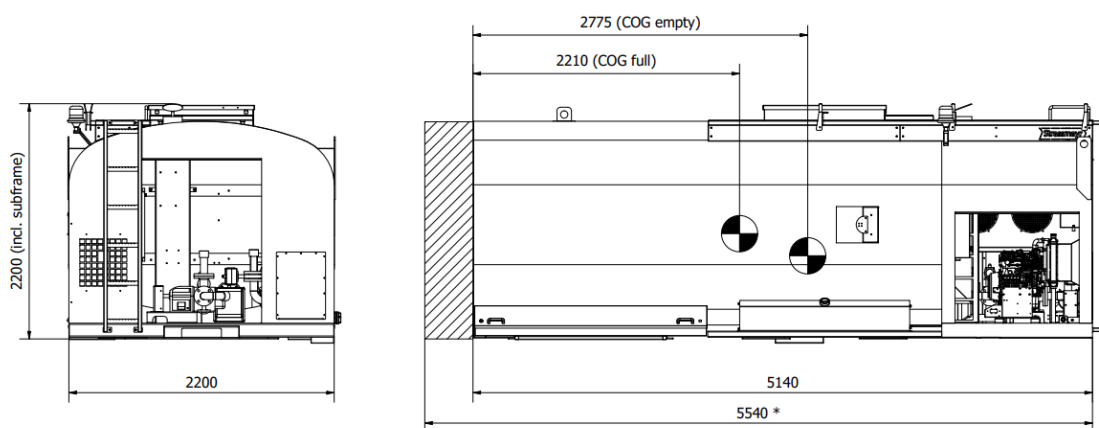
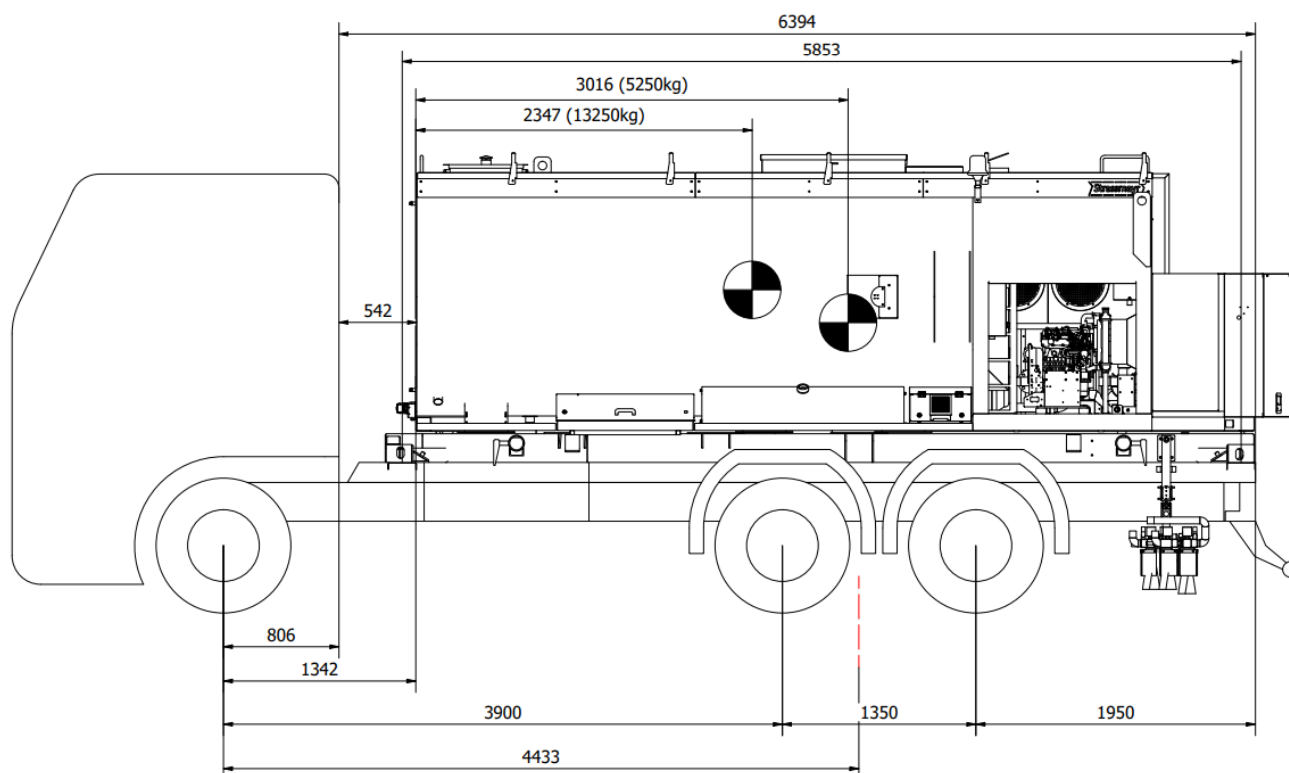
### **JAPAFRICA MOBILITY SOLUTIONS, UNIPessoal LDA**

Registada Cons. Reg. Com. Funchal  
NIPC 514 591 889  
Capital Social 505.000,00€

Rua Ivens, Nº22, 4º Direito  
Ilha da Madeira, Funchal (Sé)  
9000-046 Funchal

[www.japafrica.com](http://www.japafrica.com)

## Technical diagrams



### JAPAFRICA MOBILITY SOLUTIONS, UNIPessoal LDA

Registada Cons. Reg. Com. Funchal  
NIPC 514 591 889  
Capital Social 505.000,00€

Rua Ivens, Nº22, 4º Direito  
Ilha da Madeira, Funchal (Sé)  
9000-046 Funchal

[www.japafrica.com](http://www.japafrica.com)

### Optional equipment – (not included in price)

---

2 rear cameras, mounted at rear side of the machine with monitor mounted in the driver's cabin with all necessary connections

---

Additional coat heating for emulsion pump and emulsion filter

---

Additional heating for the spraying bar

---

Additional tank, made of stainless steel, to be used with water\* or lime milk\*\*  
Integrated with the cover of emulsion bin  
Capacity of water bin 2 000 L  
\* Without water pump – to be ordered separately below  
\*\* Without lime milk system – to be ordered separately below

---

Hydraulically driven water pump for water tank  
Capacity of 300 l/min, required connections and control system

---

Lime milk spraying system for lime tank (for protection of adhesive layers)  
Special screw pump with required connections  
Front spray bar made from stainless steel  
Stainless steel cleaning tank  
Additional control box in the cabin

---

Change to gear type emulsion pump Varisco giving the possibility to suck the emulsion from external sources, even in case the source is on lower level then the pump body  
420 l/min - Varisco pump  
700 l/min - Varisco pump

---

Diesel pump station (to be always confirmed at order)  
Required connection to the second tank of the truck  
Electric diesel pump with pistol, hose reel and counter

---

**System E-service**, allowing direct support by program or computer problems secured by SIM Card via Internet access.

---

### **Spraying bar HSB 4000/100**

With step-less hydraulic regulation of working width  
Total width of the spraying bar 4 000 mm, transport width 2 500 mm  
Triple spraying bar, with two extensions to be opened with hydraulic drive  
Hydraulic regulation of the spraying bar height  
Distance between nozzles of 100 mm  
1 set of nozzles included (please specify the required spraying amount at the order)

---

## Optional equipment – (not included in price) - Continued

---

### Spraying bar HSB 5000/100

With step-less hydraulic regulation of working width

Total width of the spraying bar 5 000 mm, transport width 2 500 mm

Triple spraying bar, with two extensions to be opened with hydraulic drive

Hydraulic regulation of the spraying bar height

Distance between nozzles of 100 mm

1 set of nozzles included (please specify the required spraying amount at the order)

---

### Sweeper SW 2300 (driven hydraulically)

Requires full PTO system ready built on the truck

min. 40 l/min @ 220b of hydraulic oil flow, P+T quick couplings

Basic sweeper with mechanical angle control

Options:

- ☐ hydraulic angle control
  - ☐ water system
  - ☐ waste bin
  - ☐ hydraulic side brush
- 

PTO drive system for the sweeper

Operation from the truck cabin

Ver. 1. PTO comp. for gearbox/engine, pump, oil tank, filter, divider, connections

Ver. 2. Pump, oil tank, filter, divider, connections

---

Additional system of "night heating"

Two stage oil burner Riello RG2

---

Set of legs with frame

Storage system for sprayer, to be used when empty

---

Automatic hose retractor - assembled on the rear side of the emulsion tank

---

Emulsion hose - 2", 4 m hose for filling/emptying the tank, quick couplings

---

PTO drive system for the emulsion sprayer

No engine, PTO for gearbox/engine, pump, oil tank, filter, divider, connections

---