

PALFINGER PK 44502 + FLATBED

SPECIFICATION:

FLATBED: 6500 mm x 2550 mm x 600 mm

Lower structure composed of two longitudinal beams and cross-members made of structural tubing.

Floor made of Domex 460 steel plate with 4 mm thickness.

Mesh constructed from tubing and covered with Domex 460 steel plate, 4 mm thick.

Foldable and removable sideboards made of Domex 460 steel plate, 2 mm thick, divided into three sections.

Removable "Kinigrip"-type pillars.

10+10+4 tie-down hooks on the lower section of the lateral and rear profiles.

5 tie-down plates on each side.

3+2 lateral tie-down rollers.

Galvanized metal mudguards with rubber edging.

Electrical signalling composed of marker and reflector lights compliant with current regulations.

Lateral reflectors.

One metal toolbox.

A 2-step ladder mounted at the rear.

Protective grilles for rear light clusters

PALFINGER: PK 44502

CRANE

BASIC SPECIFICATIONS

Lifting moment:	41.9 mt / 410.8 kNm
Max. hydraulic outreach:	16.3 m
Hydraulic outreach I basic version;	8.1m (A)
Slewing angle:	400°
Slewing moment:	5.5 mt / 54.0 kNm
Stabilizer spread:	7.4 m
Oil tank:	200l loose
Max. operating pressure:	320 bar
Dead weight (std.):	4399 kg



JAPAFRICA
MOBILITY SOLUTIONS

Dead center over the leg beam

The rotation rack stops are located on the leg beam.

Hydraulic outriggers

Hydraulically extendable with separate stabilizer controls

Double hydraulic locking of stabilizers without additional mechanical locking – Reduces setup time

Safety during operation

Ground-level stabilizer control, 4 elements

Manual control of crane stabilizers with a 4-element control valve mounted on the crane

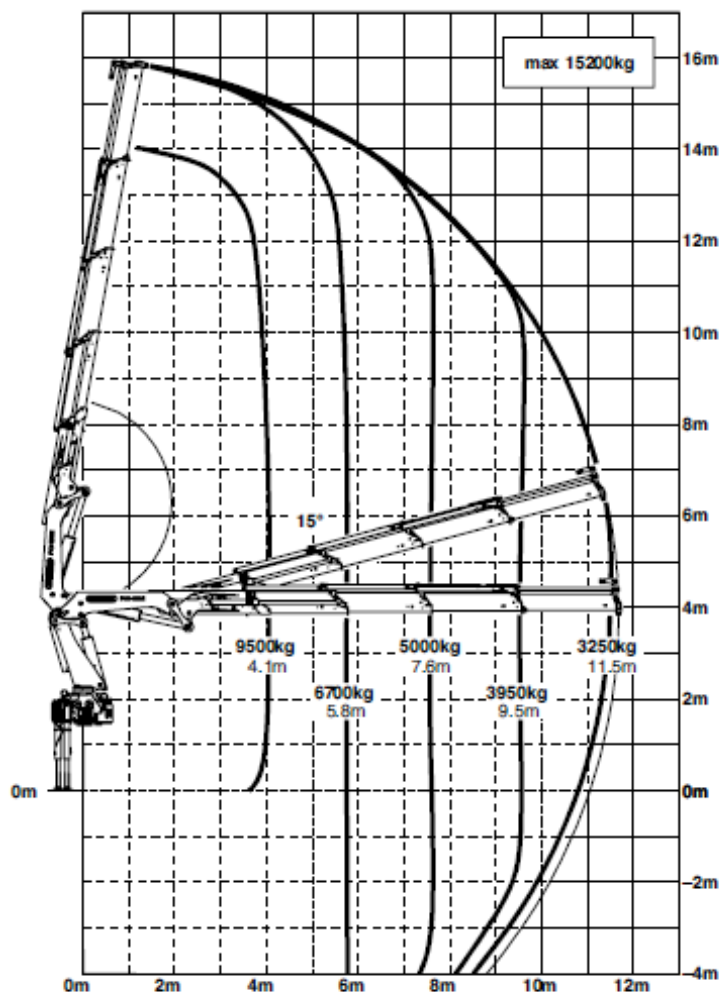
Crane preservation

Crane treatment with anti-rust wax for preservation during transport

Especially for transport and storage abroad

Corrosion protection

Desenhos técnicos:



JAPAFRICA MOBILITY SOLUTIONS, UNIPessoal LDA

Registada Cons. Reg. Com. Funchal
NIPC 514 591 889
Capital Social 505.000,00€

Rua Ivens, Nº22, 4º Direito
Ilha da Madeira, Funchal (Sé)
9000-046 Funchal

www.japafrica.com