

FLATEBED WITH CRANE PK33002 EH (or equivalent)

BODY SPECIFICATIONS

Length (external):	6500mm
Width (external):	2550mm
Height side walls:	600mm
Volume approx.:	9m ³
Floor:	5/6mm S355 steel
Sides: per side	2.2mm HV profile S235 with bottom hinges, manual locking, 3 pannels with removable pillars
Height front wall steady:	1200mm
Rear door:	2.2mm HV profile S235 with bottom hinges, manual locking
Lashing points integrated in outer-frame	

HIDRAULIC SYSTEM

Hydraulic tank/pump delivered with crane

OTHER EQUIPAMENT

Palfinger PK 33002-EH (or equivalent),
Plastic mudguards with mudflaps on rear axles,
Original rear underrun protection,
Reflective sticker tape,
Yellow side marking lights,
Body and subframe shot blasted, primed and final painted in selected color,
All steel parts shot blasted, primed and lacquer

CRANE

BASIC SPECIFICATIONS

Lifting moment:	305.0kNm/31.1mt
Hydraulic outreach I basic version;	8.1m (A)
Double linkage with power link plus:	15°
Slewing angle:	400°
Slewing moment:	31.4kNm/3.2mt
Stabilizer spread:	5.6m (R2X)
Oil cooler:	8.5KW mounted
Oil tank:	200l loose

JAPAFRICA MOBILITY SOLUTIONS, UNIPessoal LDA

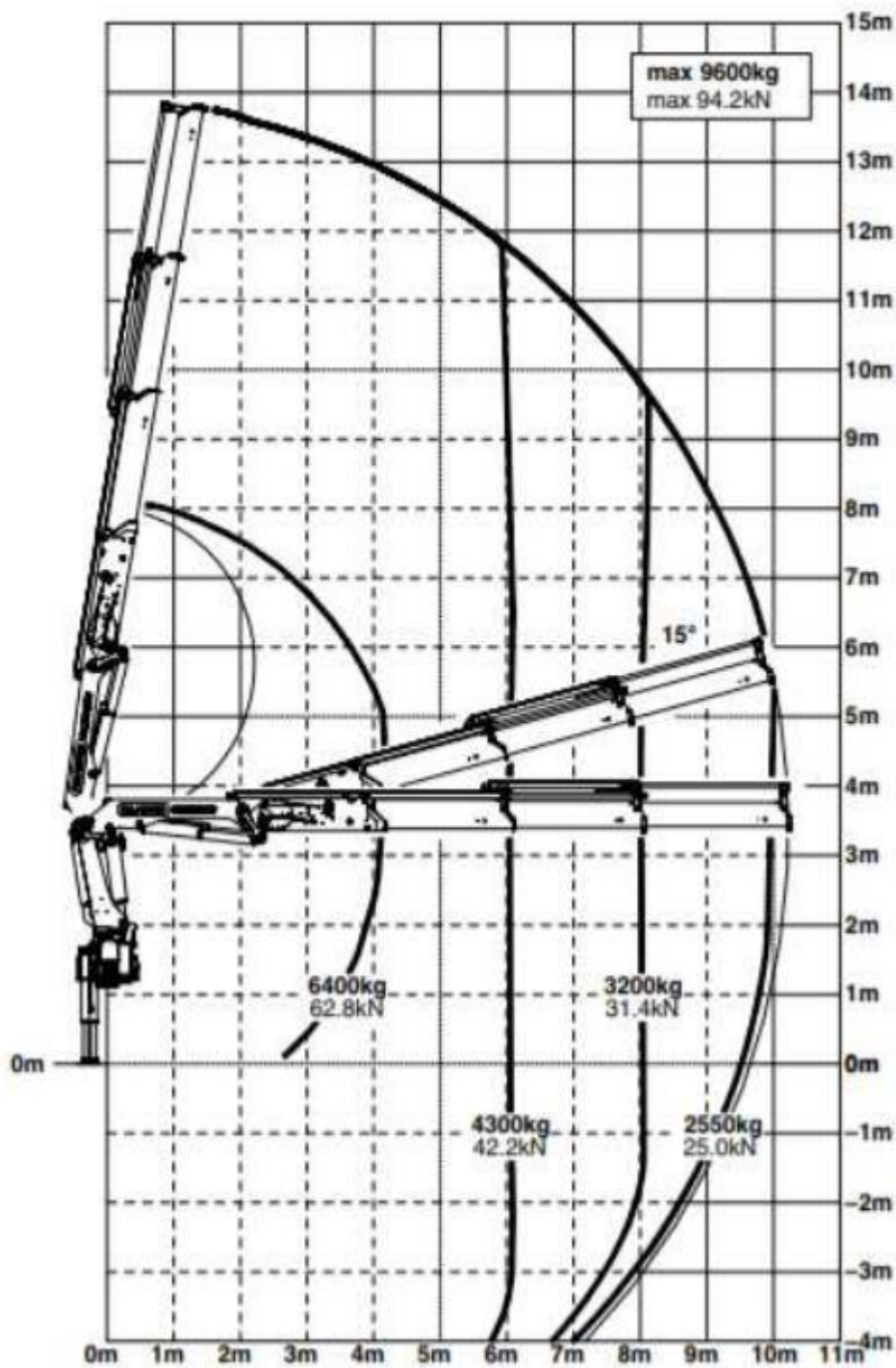
Registada Cons. Reg. Com. Funchal
NIPC 514 591 889
Capital Social 505.000,00€

Rua Ivens, Nº22, 4º Direito
Ilha da Madeira, Funchal (Sé)
9000-046 Funchal

www.japafrika.com



JAPAFRICA
MOBILITY SOLUTIONS



JAPAFRICA MOBILITY SOLUTIONS, UNIPessoal LDA

Registada Cons. Reg. Com. Funchal
NIPC 514 591 889
Capital Social 505.000,00€

Rua Ivens, Nº22, 4º Direito
Ilha da Madeira, Funchal (Sé)
9000-046 Funchal

www.japafrica.com