



**JAPAFRICA**  
MOBILITY SOLUTIONS

## FLATBED WITH CRANE PK32080 B NCE



*\* photo and drawing are reference only, deviations are possible*

### BODY SPECIFICATIONS

Length (external):	6500mm
Width (external):	2550mm
Height side walls:	600mm
Volume approx.:	9m3
Floor:	5/6mm S355 steel
Sides:	2.2mm HV profile S235 with bottom hinges, manual locking, 3 panels per side with removable pillars,
Height front wall steady:	1200mm
Rear door:	2.2mm HV profile S235 with bottom hinges, manual locking
Lashing points integrated in outer-frame	

### HIDRAULIC SYSTEM

Hydraulic tank/pump delivered with crane

### OTHER EQUIPAMENT

Palfinger PK 32080 B NCE,  
Plastic mudguards with mudflaps on rear axles,  
Original rear underrun protection,  
4x twist locks for container,  
Reflective sticker tape,  
Yellow side marking lights,  
Body and subframe shot blasted, primed and final painted in selected color,  
All steel parts shot blasted, primed and lacquer

### JAPAFRICA MOBILITY SOLUTIONS, UNIPessoal LDA

Registada Cons. Reg. Com. Funchal  
NIPC 514 591 889  
Capital Social 505.000,00€

Rua Ivens, Nº22, 4º Direito  
Ilha da Madeira, Funchal (Sé)  
9000-046 Funchal

[www.japafrika.com](http://www.japafrika.com)



## CRANE

### BASIC SPECIFICATIONS

Lifting moment:	298.0 kNm (30.4mt)
Hydraulic outreach I basic version;	8.1m (A)
Slewing angle:	400°
Stabilizer spread:	6.0m
Oil cooler:	8.5KW loose
Oil tank:	200l loose

Classification according to EN12999 H1/B3

High extension speed by applying return oil utilization and oil passage through the cylinders

Rack and pinion slewing system

Single stabilizer control with operated check valves on the stabilizer

Controls on each side of the crane

Box level on both control panels

Outriggers hydraulic, long

Hydraulically extendable with separate stabilizer controls

Double hydraulic outrigger lock without additional mechanical lock

Stabilizer plate extension 100mm

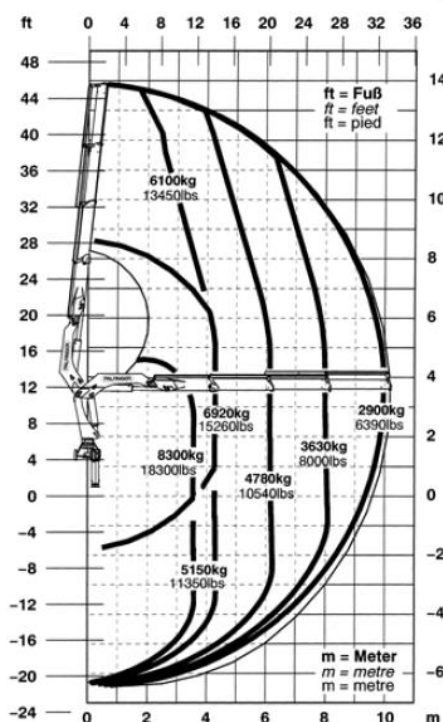
Emergency cut-off

Emergency cut-off and digital hour counter

Overload protection

Hydraulic with locking cylinders

Mounting parts; bolts 8 pcs.



### Lifting capacities

3.6 m	11' 10"	8300 kg	18300 lbs
4.3 m	14' 1"	6920 kg	15260 lbs
6.1 m	20' 0"	4780 kg	10540 lbs
8.0 m	26' 3"	3630 kg	8000 lbs
9.9 m	32' 6"	2900 kg	6390 lbs

**B**

**JAPAFRICA MOBILITY SOLUTIONS, UNIPessoal LDA**

Registada Cons. Reg. Com. Funchal  
NIPC 514 591 889  
Capital Social 505.000,00€

Rua Ivens, Nº22, 4º Direito  
Ilha da Madeira, Funchal (Sé)  
9000-046 Funchal

[www.japafrica.com](http://www.japafrica.com)